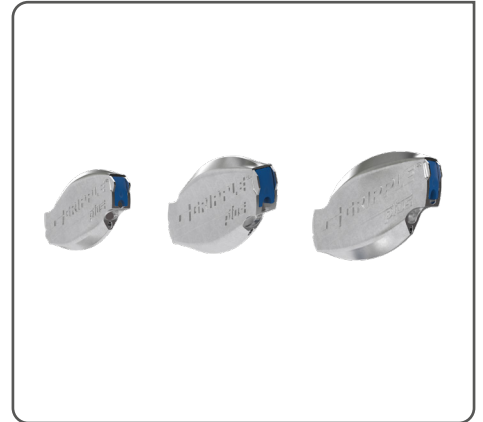


The Gripple Plus range of wire joiners and tensioners is suitable for all trellis applications.

FEATURES / BENEFITS

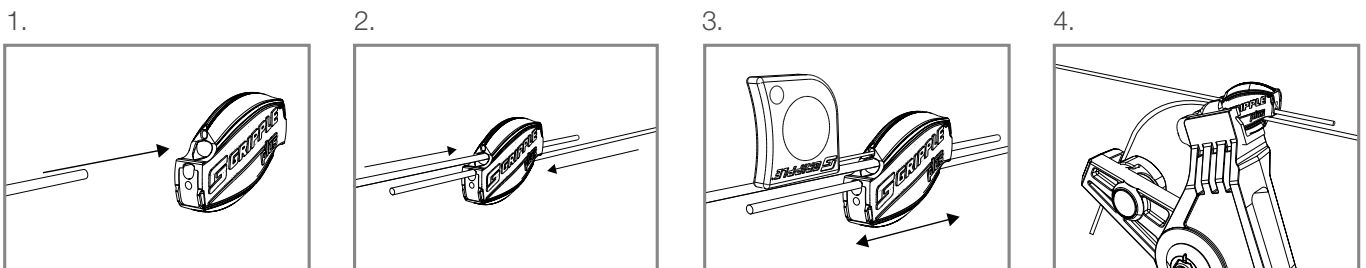
- Join and tension in one
- Eliminates tying and knotting wires, reducing installation time
- Ideal for use on high tensile and mild steel trellis wire
- Designed for high load holding and corrosion resistance
- Easily re-tensioned year-after-year



SPECIFICATION

Product	Wire Range	Maximum Working Load
Gripple Plus Small	1.40 mm - 2.20 mm	300 kg
Gripple Plus Medium	2.00 mm - 3.25 mm	400 kg
Gripple Plus Large	3.20 mm - 4.20 mm	600 kg

INSTALLATION



TIPS

- Apply and re-apply tension with a tensioning tool (leave at least 75 mm tail wire)
- Reposition before applying tension using a Setting Key
- For video installation instructions visit our YouTube channel GrippleTV UK

